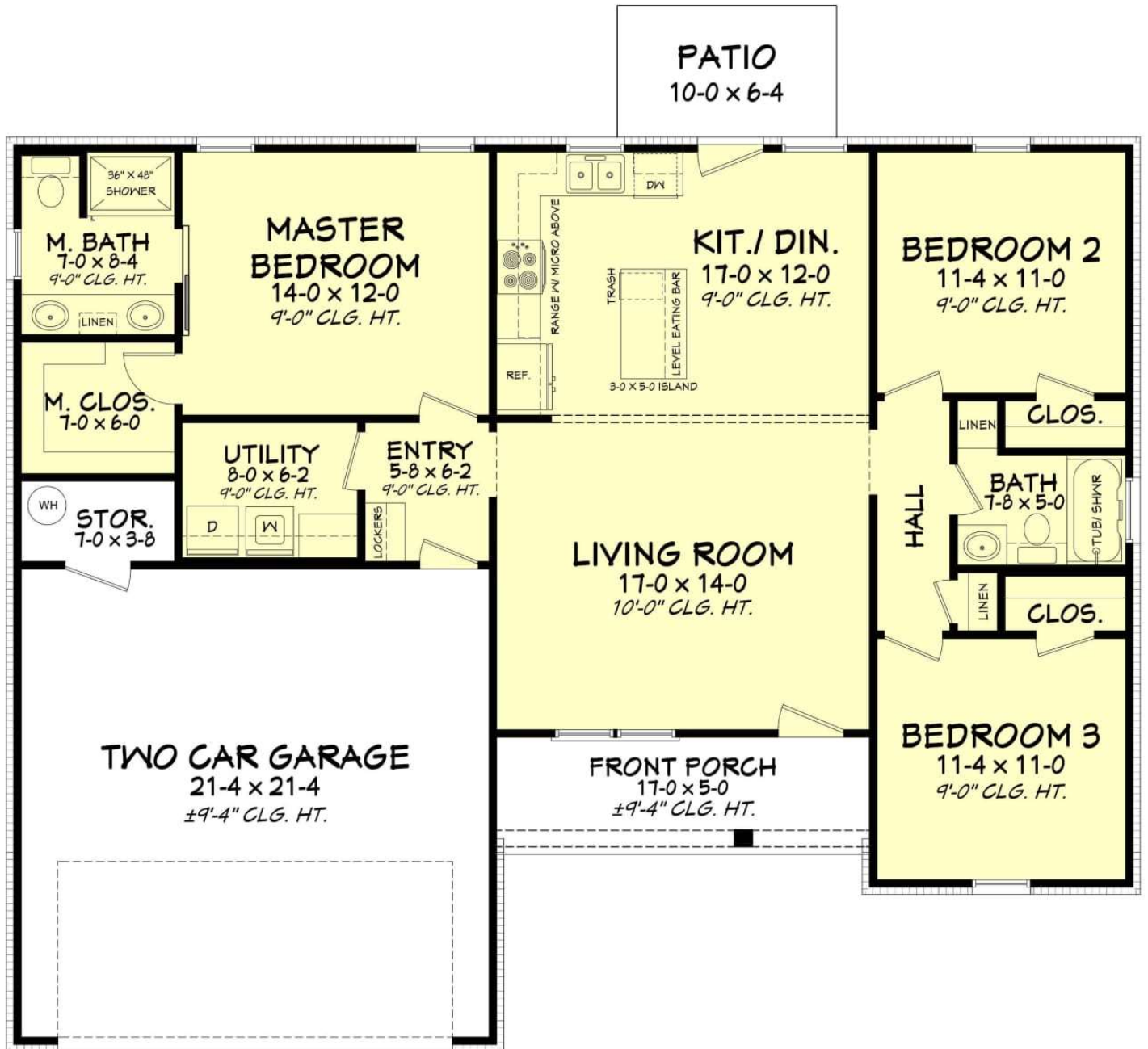


# The Farm at Highland Lake Village

## The "WILTON"





## First Floor

### Square Footage Breakdown

- Total Heated Area: 1,264 sq. ft.
- 1st Floor: 1,264 sq. ft.
- Porch, Front: 85 sq. ft.

### Beds/Baths

- Bedrooms: 3
- Full bathrooms: 2

### Dimensions

- Width: 51'
- Depth: 41'

### Garage

- Type: Attached
- Area: 474 sq. ft.
- Details: 2 Cars
- Location: Front

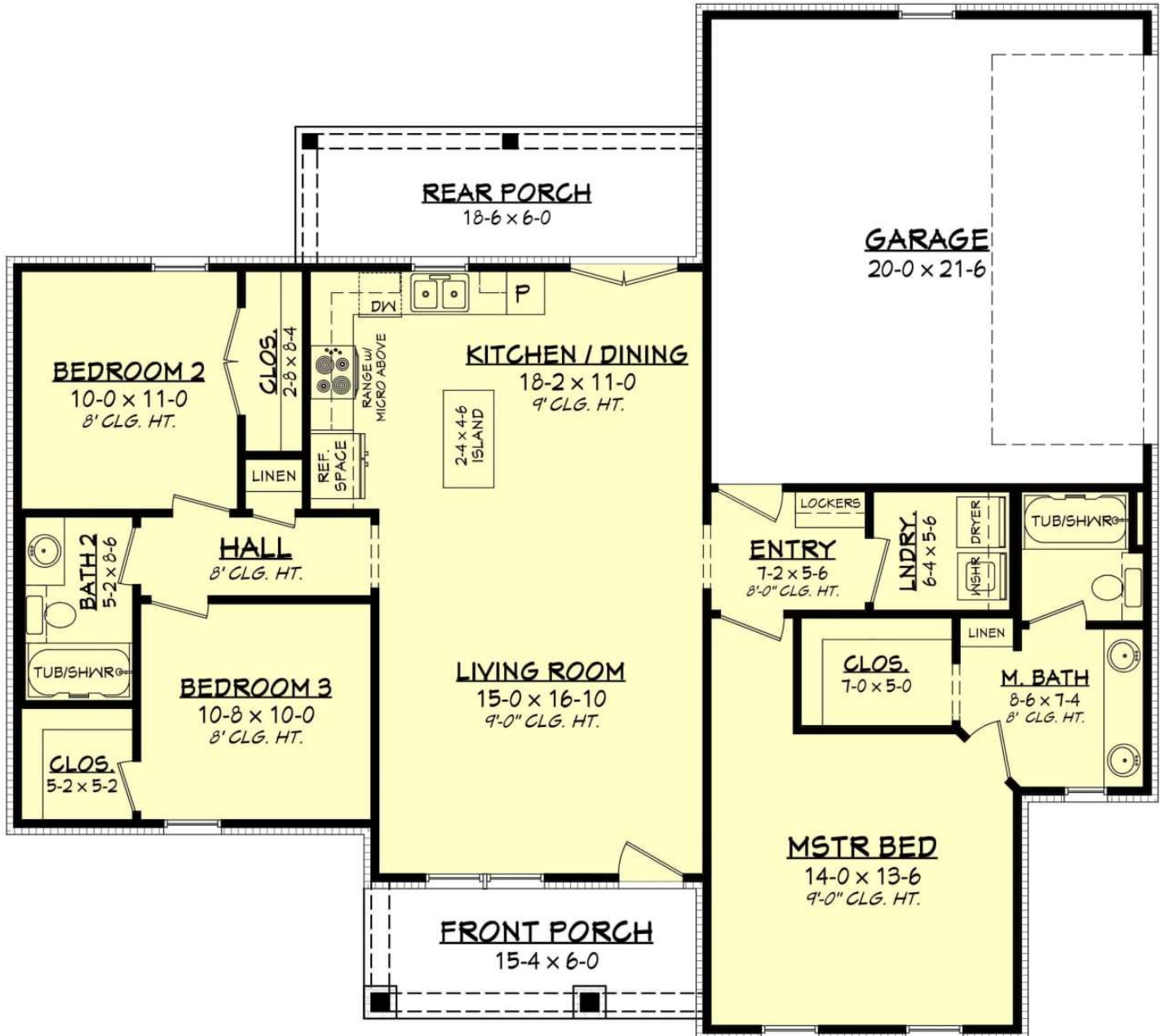


Note: This house plan can be built on Lots 1-6, 20 & 21 only per deed restrictions



# The Farm at Highland Lake Village

## The “BROOKFIELD”





## First Floor

### Square Footage Breakdown

- Total Heated Area: 1,327 sq. ft.
- 1st Floor: 1,327 sq. ft.
- Porch, Rear: 111 sq. ft.
- Porch, Front: 92 sq. ft.

### Beds/Baths

- Bedrooms: 3
- Full bathrooms: 2

### Dimensions

- Width: 52' 6"
- Depth: 47' 2"

### Garage

- Type: Attached
- Area: 448 sq. ft.
- Details: 2 Cars
- Location: Side

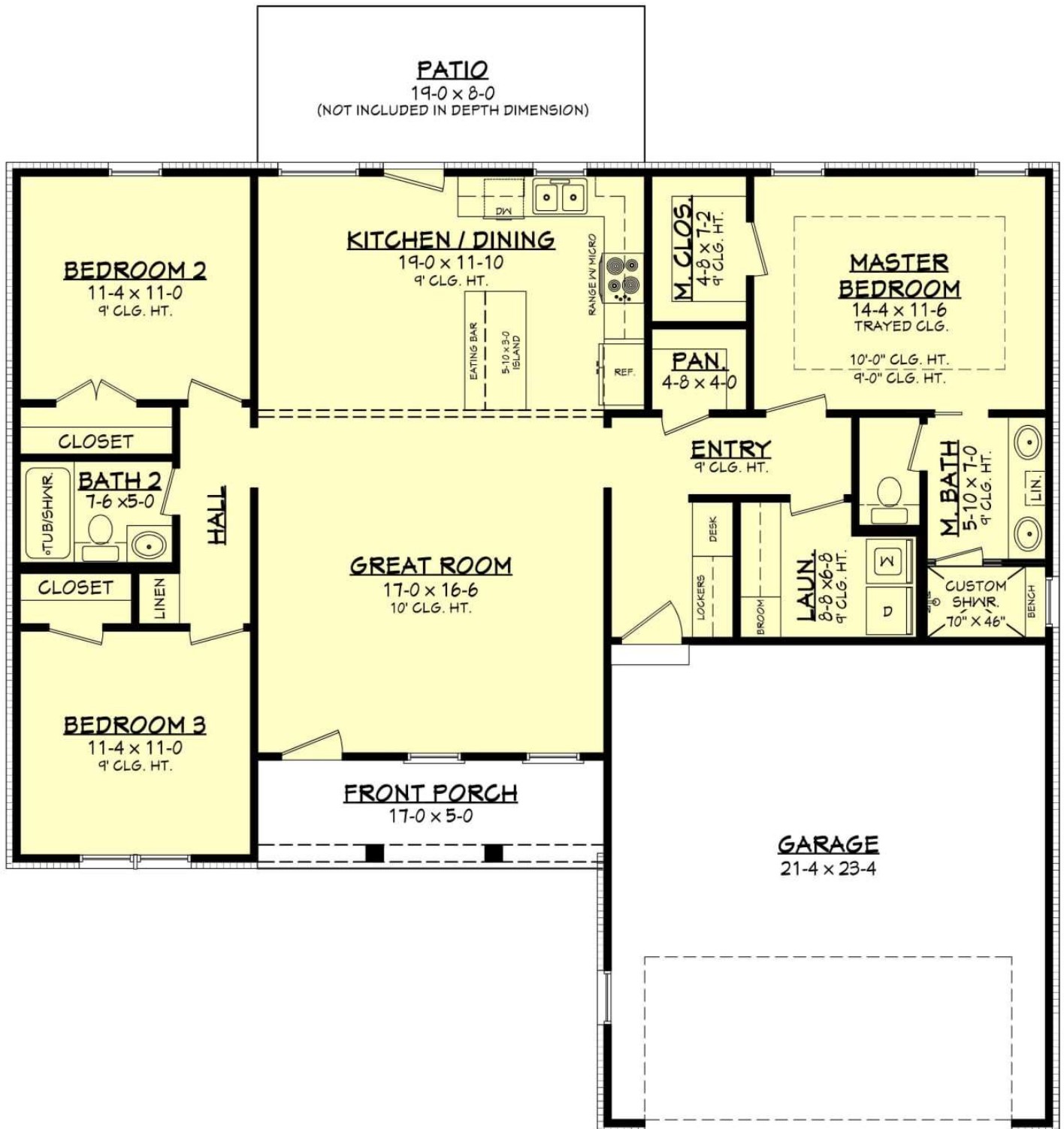


Note: This house plan can be built on Lots 1-6, 20 & 21 only per deed restrictions



# The Farm at Highland Lake Village

## The “AUBREY CREEK”





## First Floor

### Square Footage Breakdown

- Total Heated Area: 1,416 sq. ft.
- 1st Floor: 1,416 sq. ft.
- Porch, Front: 85 sq. ft.

### Beds/Baths

- Bedrooms: 3
- Full bathrooms: 2

### Dimensions

- Width: 51'
- Depth: 47'

### Garage

- Type: Attached
- Area: 519 sq. ft.
- Details: 2 Cars
- Location: Front

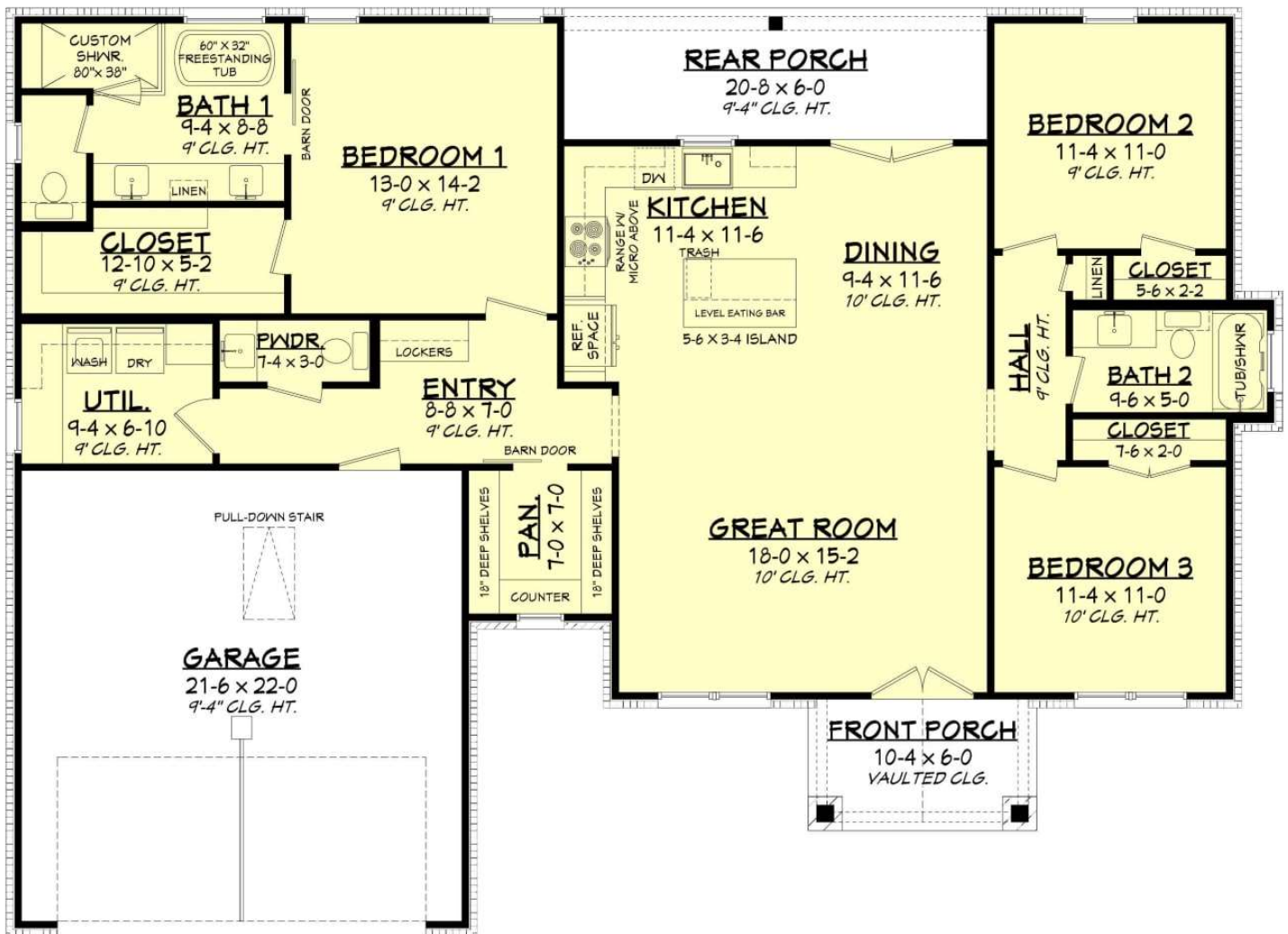


Note: This house plan can be built on Lots 1-6, 20 & 21 only per deed restrictions



# The Farm at Highland Lake Village

## The “EDGEMOOR”





## First Floor

### Square Footage Breakdown

- Total Heated Area: 1,599 sq. ft.
- 1st Floor: 1,599 sq. ft.
- Porch, Rear: 124 sq. ft.
- Porch, Front: 62 sq. ft.

### Beds/Baths

- Bedrooms: 3
- Full bathrooms: 2

### Dimensions

- Width: 61' 6"
- Depth: 44' 6"

### Garage

- Type: Attached
- Area: 493 sq. ft.
- Details: 2 Cars
- Location: Front

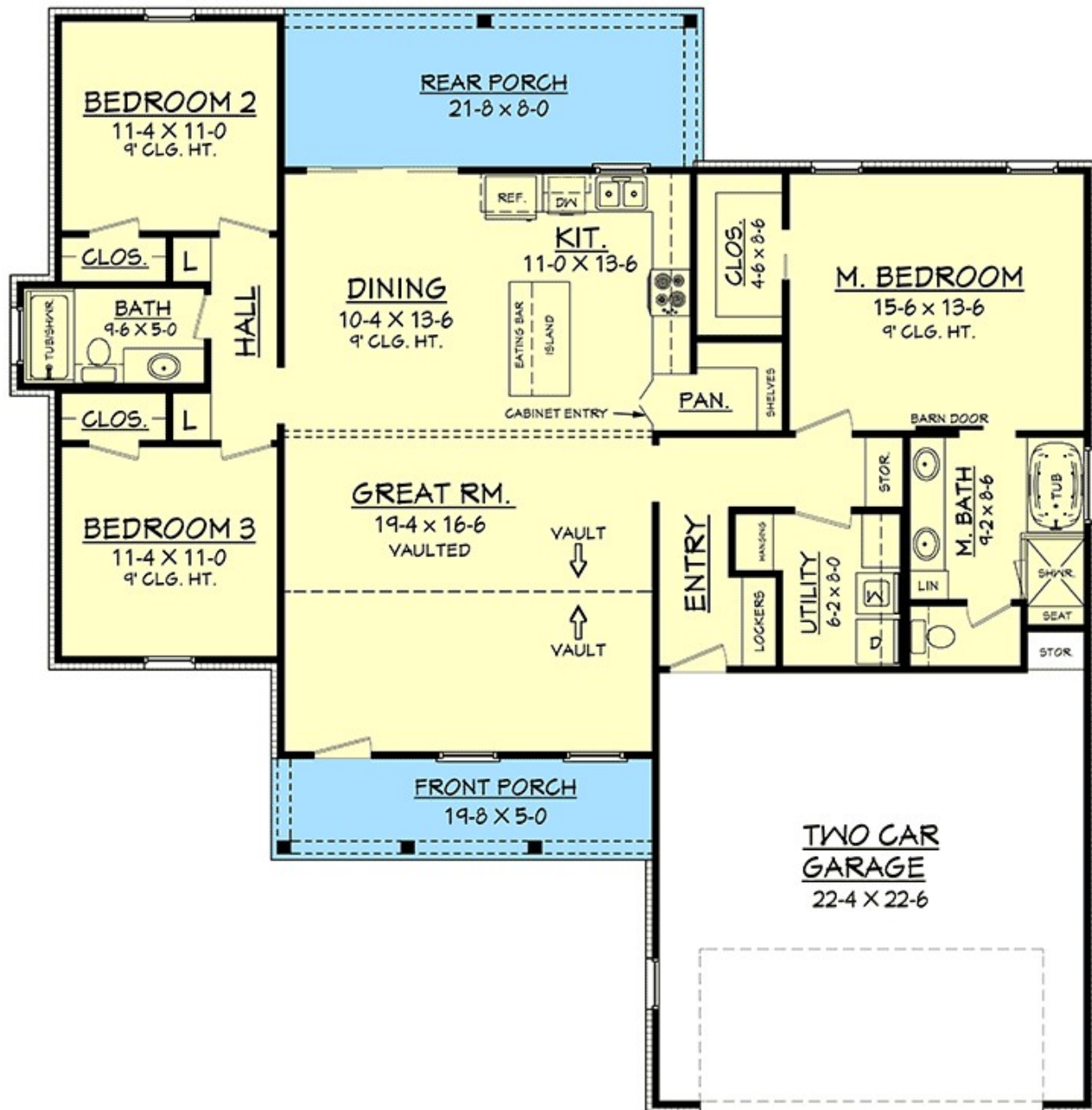


Note: This house plan can be built on Lots 1-6, 20 & 21 only per deed restrictions



# The Farm at Highland Lake Village

## The “SUNLAND”







#### First Floor

##### **Square Footage Breakdown**

- Total Heated Area: 1,624 sq. ft.
- 1st Floor: 1,624 sq. ft.
- Porch, Rear: 173 sq. ft.
- Porch, Front: 98 sq. ft.

##### **Beds/Baths**

- Bedrooms: 3
- Full bathrooms: 2

##### **Dimensions**

- Width: 56' 4"
- Depth: 57' 4"

##### **Garage**

- Type: Attached
- Area: 531 sq. ft.
- Details: 2 Cars
- Location: Front

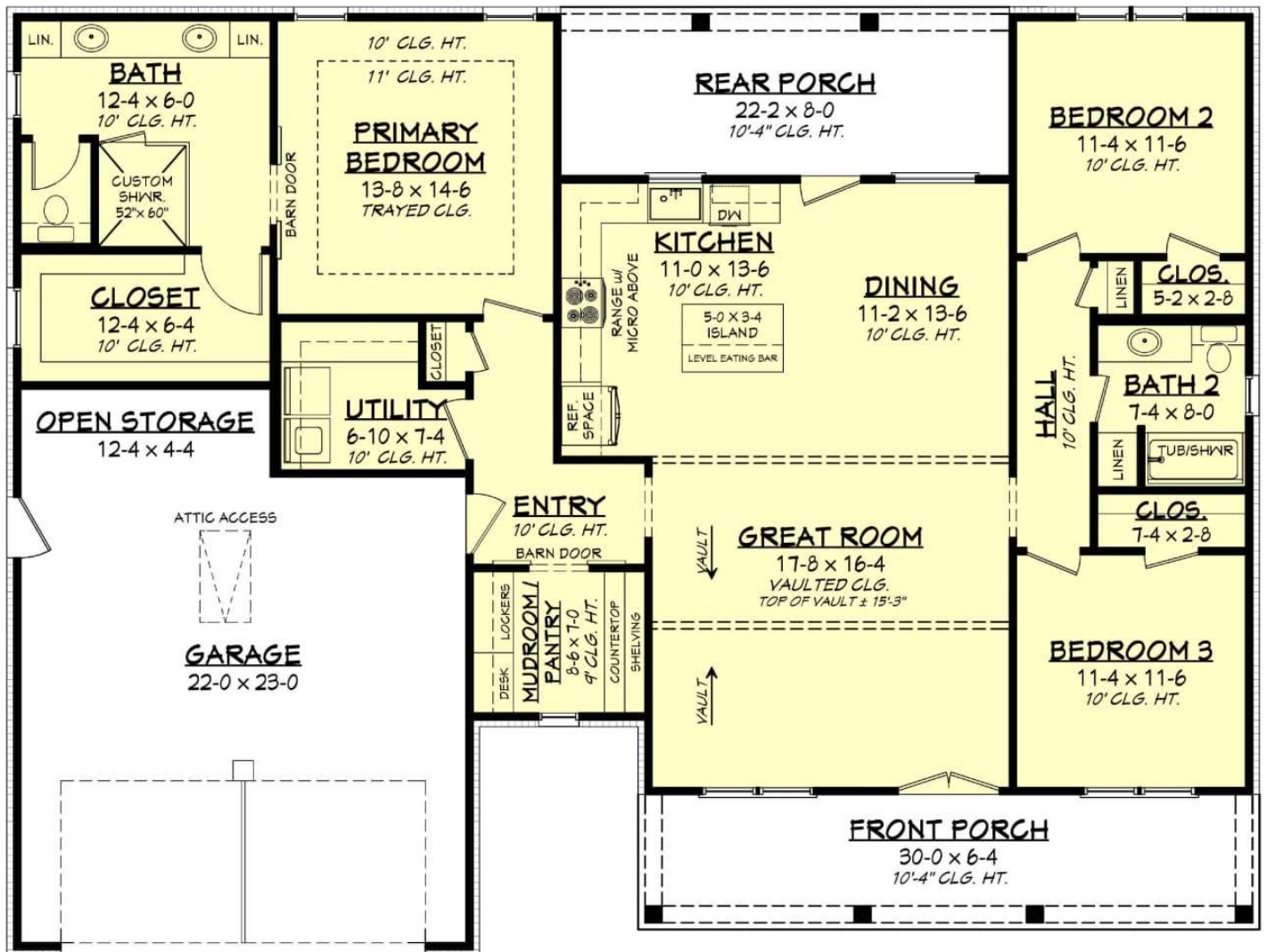
Note: This house plan can be built on Lots 1-6, 20 & 21 only per deed restrictions

Certain restrictions may apply and this plan may not be built on all lots in The Farm at Highland Lake Village. See sales representative for details. Prices, plans, designs, architectural renderings, uses, dimensions, specifications, materials, availability, improvements and incidental amenities depicted or described herein are subject to change or cancellation (in whole or part) without notice. Illustrations may include artists' depictions and differ from final improvements. Equal housing opportunity.



# The Farm at Highland Lake Village

## The "FIELDS"





## First Floor

### Square Footage Breakdown

- Total Heated Area: 1,800 sq. ft.
- 1st Floor: 1,800 sq. ft.
- Porch, Rear: 177 sq. ft.
- Porch, Front: 190 sq. ft.

### Beds/Baths

- Bedrooms: 3
- Full bathrooms: 2

### Dimensions

- Width: 61' 2"
- Depth: 46' 2"

### Garage

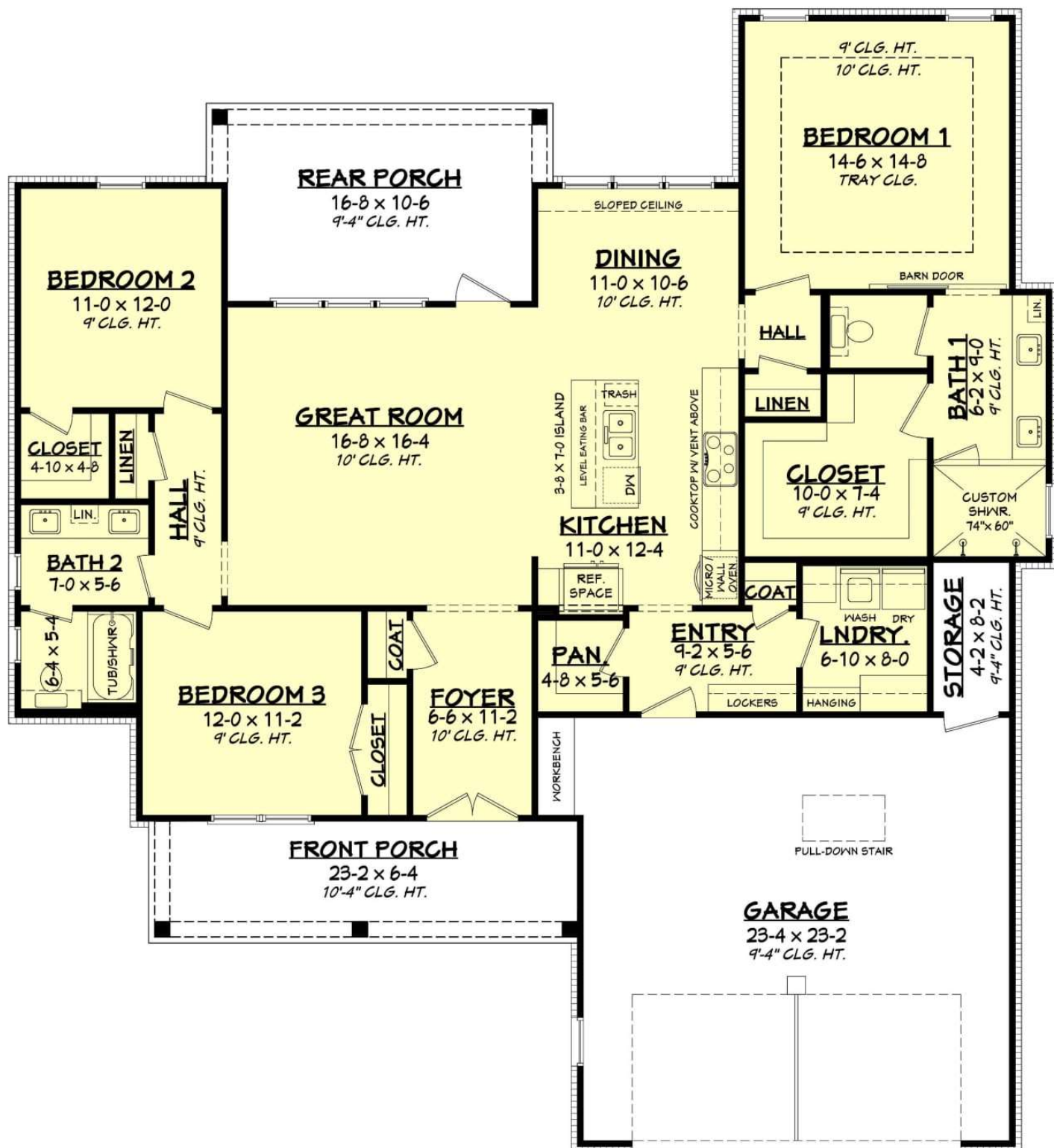
- Type: Attached
- Area: 525 sq. ft.
- Details: 2 Cars
- Location: Front





The Farm at Highland Lake Village

The “KRAMER”





## First Floor

### Square Footage Breakdown

- Total Heated Area: 1,806 sq. ft.
- 1st Floor: 1,806 sq. ft.
- Porch, Rear: 182 sq. ft.
- Porch, Front: 147 sq. ft.

### Beds/Baths

- Bedrooms: 3
- Full bathrooms: 2

### Dimensions

- Width: 52' 10"
- Depth: 62'

### Garage

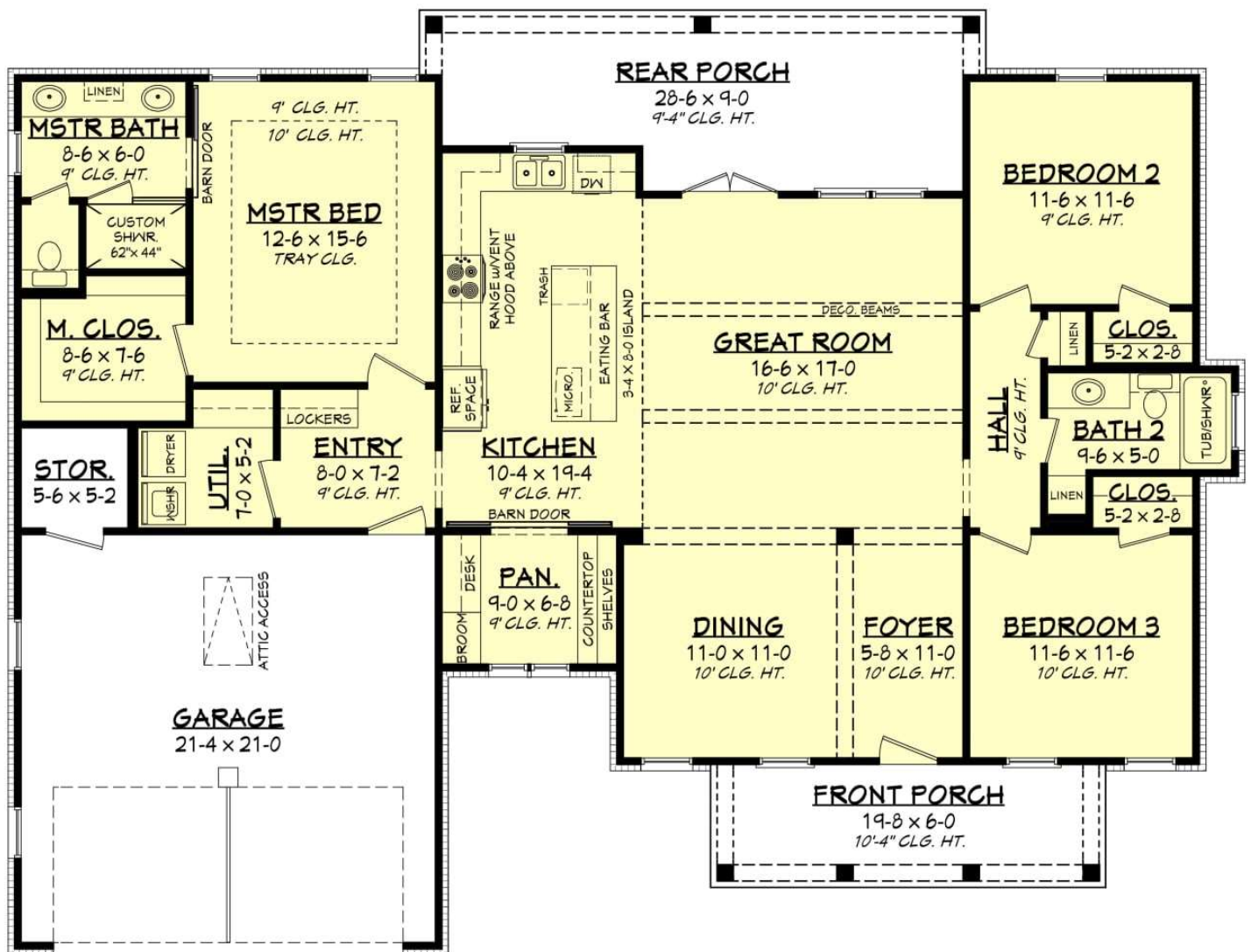
- Type: Attached
- Area: 576 sq. ft.
- Details: 2 Cars
- Location: Front





# The Farm at Highland Lake Village

## The "GRAHAM"





## First Floor

### Square Footage Breakdown

- Total Heated Area: 1,806 sq. ft.
- 1st Floor: 1,806 sq. ft.
- Porch, Rear: 222 sq. ft.
- Porch, Front: 118 sq. ft.

### Beds/Baths

- Bedrooms: 3
- Full bathrooms: 2

### Dimensions

- Width: 63'
- Depth: 48'

### Garage

- Type: Attached
- Area: 467 sq. ft.
- Details: 2 Cars
- Location: Front

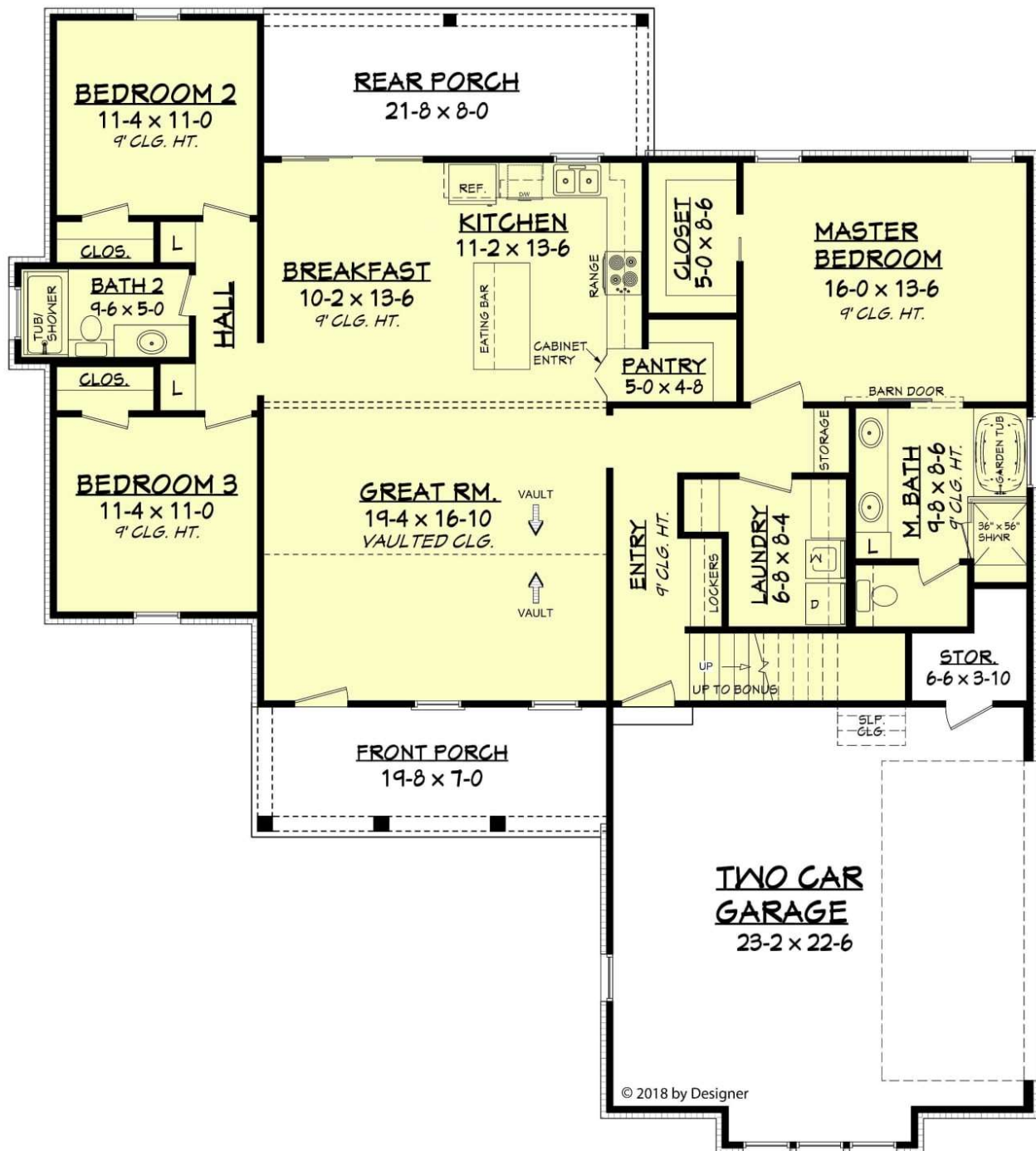




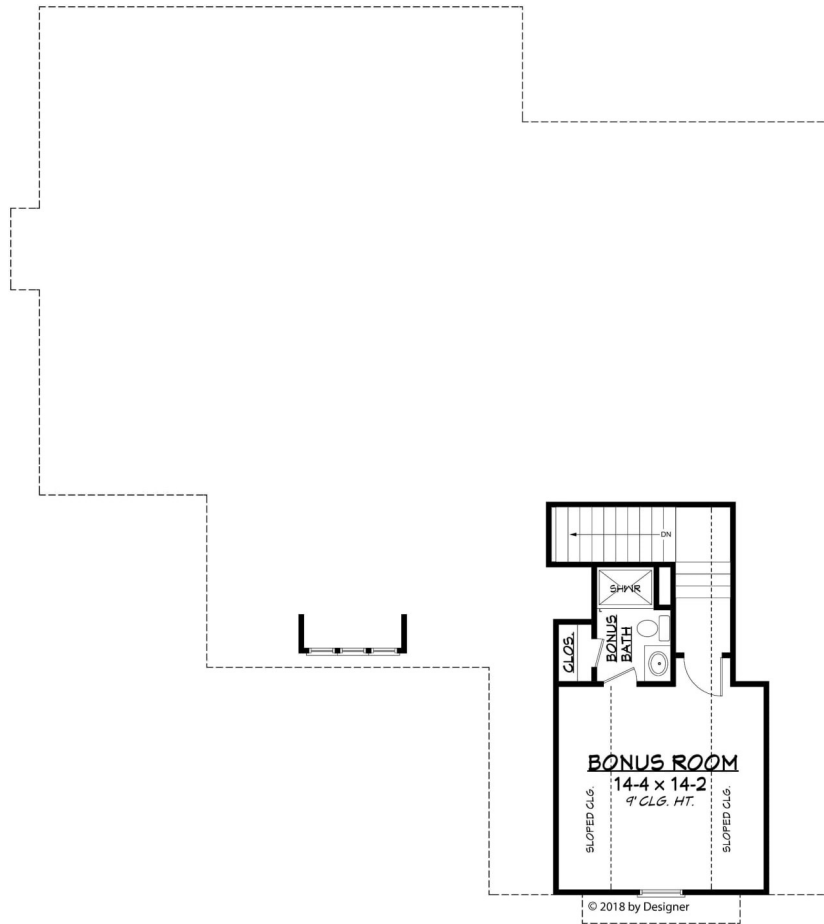
# The Farm at Highland Lake Village

## The “MADISON”

First Floor







Second Floor - Optional  
Bonus Room - Over Garage

### Square Footage Breakdown

- Total Heated Area: 1,808 sq. ft.
- 1st Floor: 1,808 sq. ft.
- Storage: 37 sq. ft.
- Porch, Rear: 173 sq. ft.
- Porch, Front: 138 sq. ft.
- Bonus: 317 sq. ft.

### Beds/Baths

- Bedrooms: 3 or 4
- Full bathrooms: 2 or 3

### Dimensions

- Width: 57' 4"
- Depth: 63' 10"

### Garage

- Type: Attached
- Area: 570 sq. ft.
- Details: 2 Cars
- Location: Side

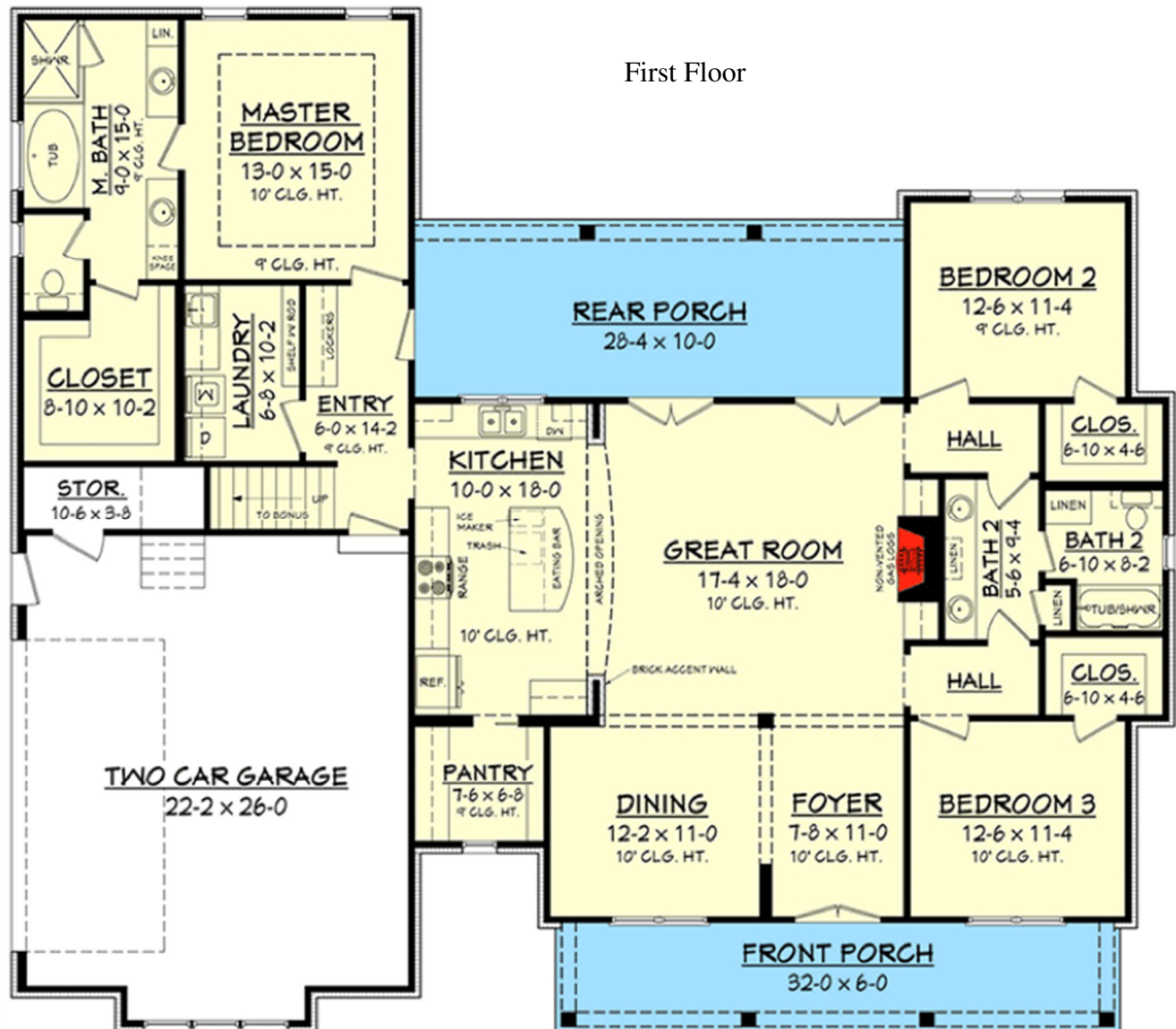




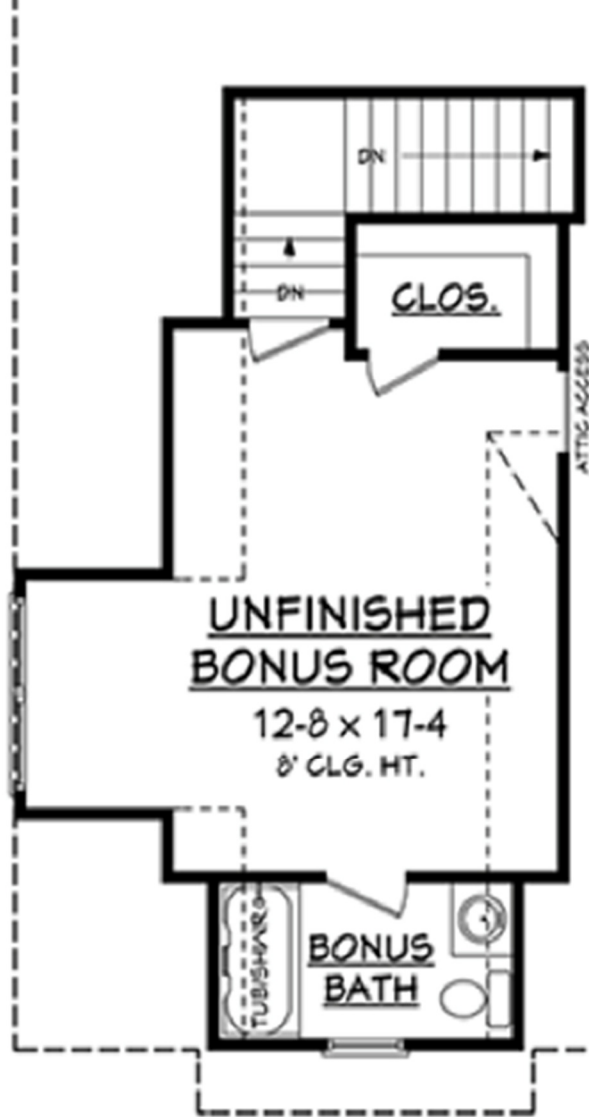
# The Farm at Highland Lake Village

## The “BLACKDOG”

First Floor







Second Floor - Optional  
Bonus Room - Over Garage

### Square Footage Breakdown

- Total Heated Area: 2,077 sq. ft.
- 1st Floor: 2,077 sq. ft.
- Storage: 43 sq. ft.
- Porch, Rear: 283 sq. ft.
- Porch, Front: 192 sq. ft.
- Bonus: 372 sq. ft.

### Beds/Baths

- Bedrooms: 3 or 4
- Full bathrooms: 2 or 3

### Dimensions

- Width: 66' 8"
- Depth: 58' 6"

### Garage

- Type: Attached
- Area: 622 sq. ft.
- Details: 2 Cars
- Location: Side

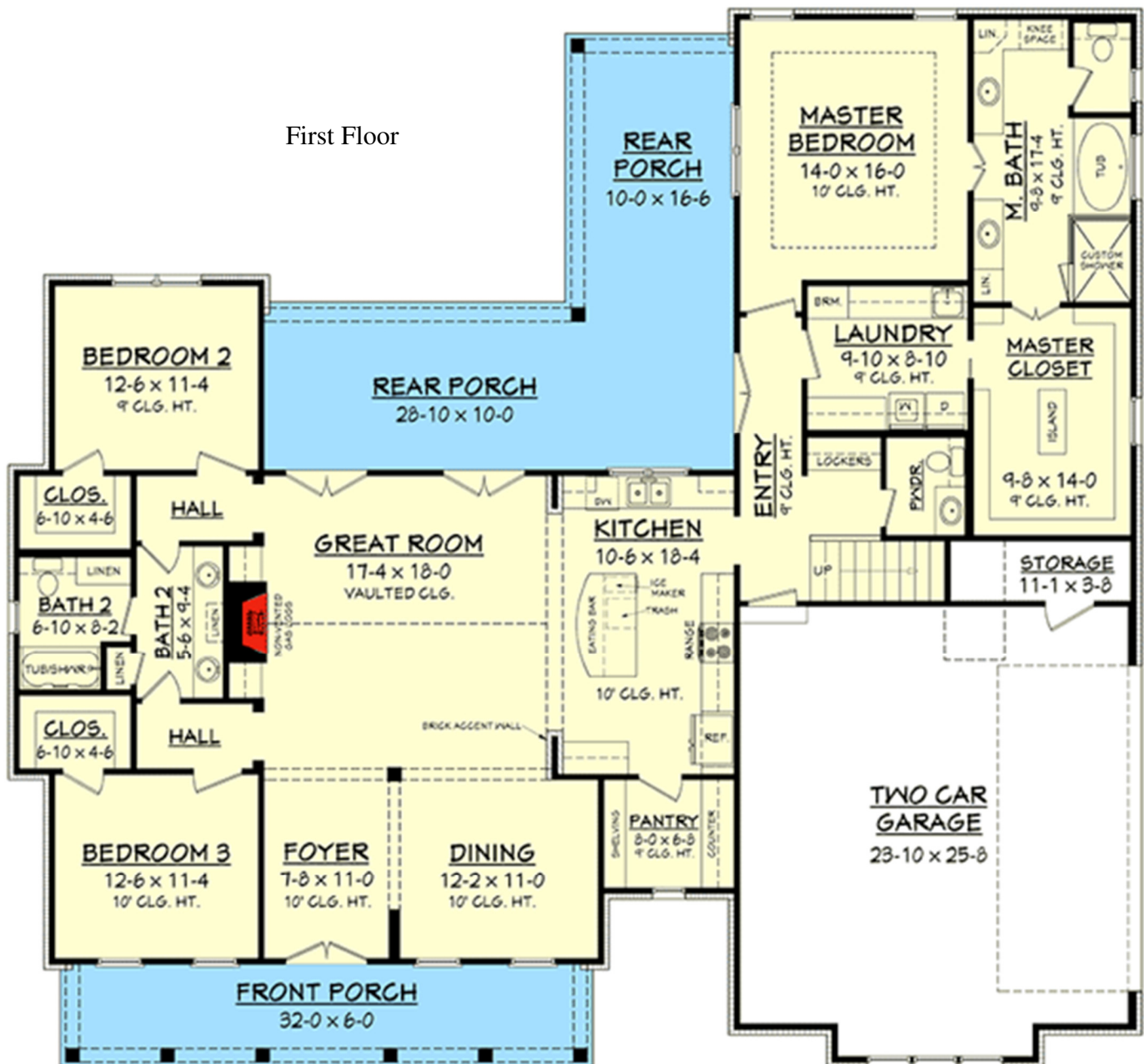




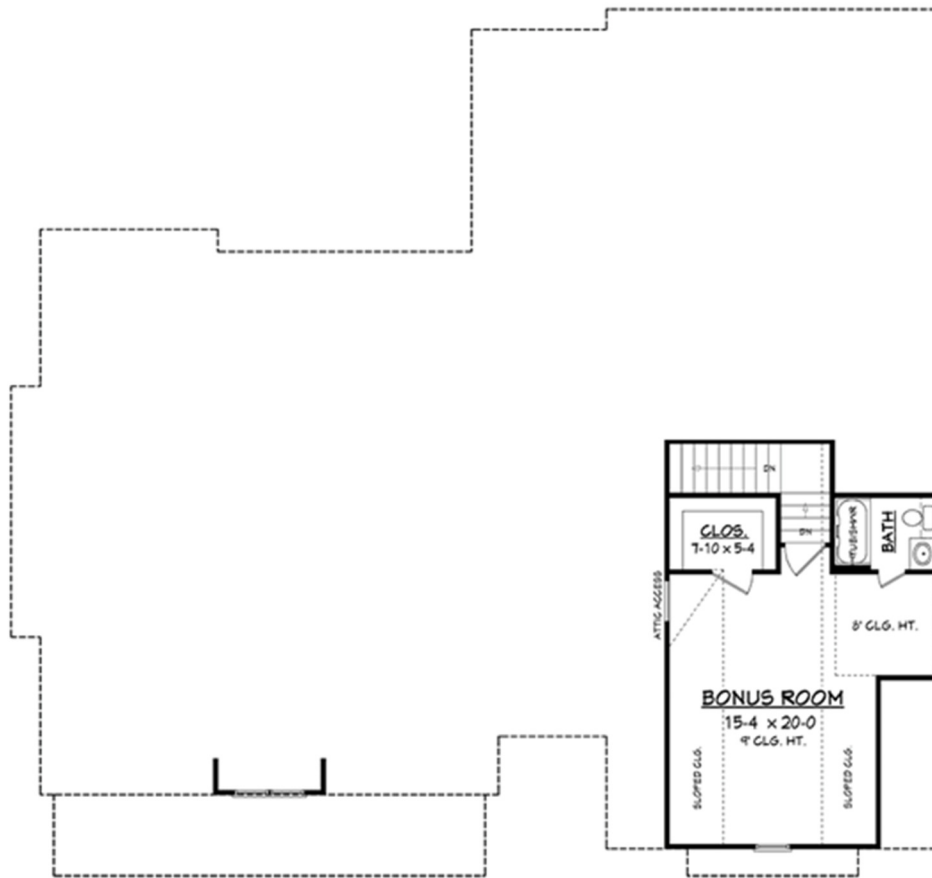
# The Farm at Highland Lake Village

## The “ALLOWAY CREEK”

First Floor







Second Floor – Optional Bonus Room – Over Garage

### Square Footage Breakdown

- Total Heated Area: 2,304 sq. ft.
- 1st Floor: 2,304 sq. ft.
- Storage: 46 sq. ft.
- Porch, Rear: 453 sq. ft.
- Porch, Front: 192 sq. ft.
- Bonus: 481

### Beds/Baths

- Bedrooms: 3 or 4
- Full bathrooms: 2 or 3
- Half bathrooms: 1

### Dimensions

- Width: 68' 10"
- Depth: 64' 4"

### Garage

- Type: Attached
- Area: 661 sq. ft.
- Details: 2 Cars
- Location: Side





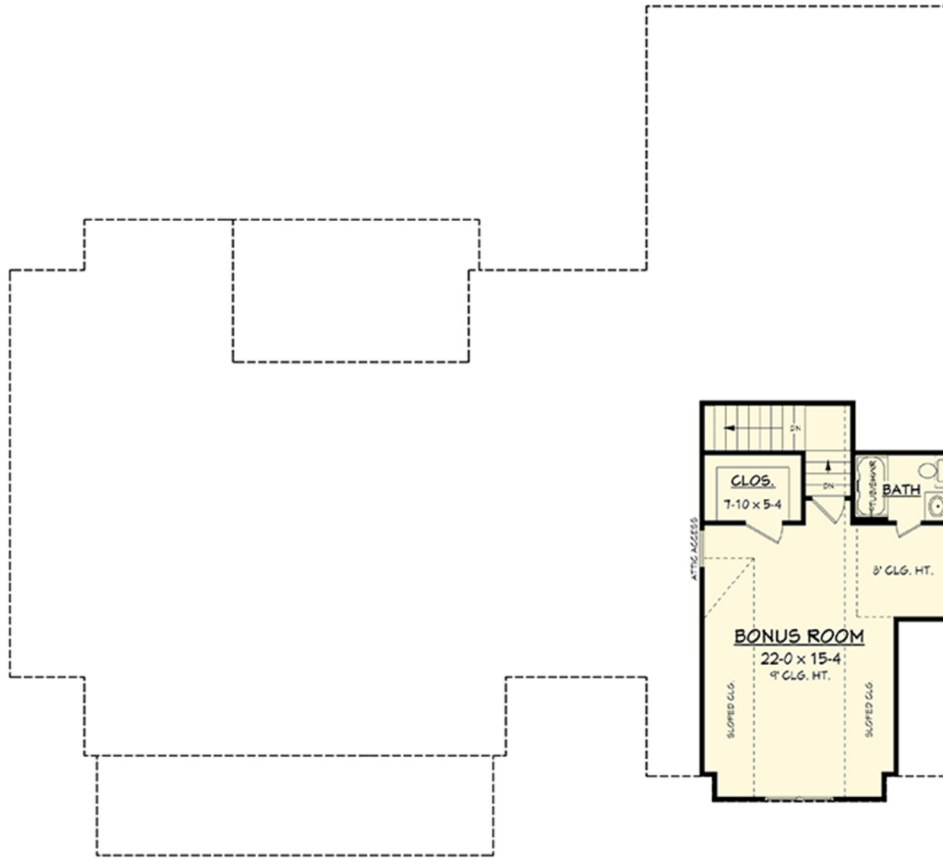
# The Farm at Highland Lake Village

## The “VINLAND”

First Floor







Second Floor – Optional Bonus Room – Over Garage

### Square Footage Breakdown

- Total Heated Area: 2,686 sq. ft.
- 1st Floor: 2,686 sq. ft.
- Storage: 32 sq. ft.
- Porch, Rear: 222 sq. ft.
- Porch, Front: 256 sq. ft.
- Bonus: 509 sq. ft.

### Beds/Baths

- Bedrooms: 4 or 5
- Full bathrooms: 2 or 3
- Half bathrooms: 1

### Dimensions

- Width: 76' 0"
- Depth: 66' 8"

### Garage

- Area: 663 sq. ft.
- Details: 2 or 3 Cars
- Location: Side

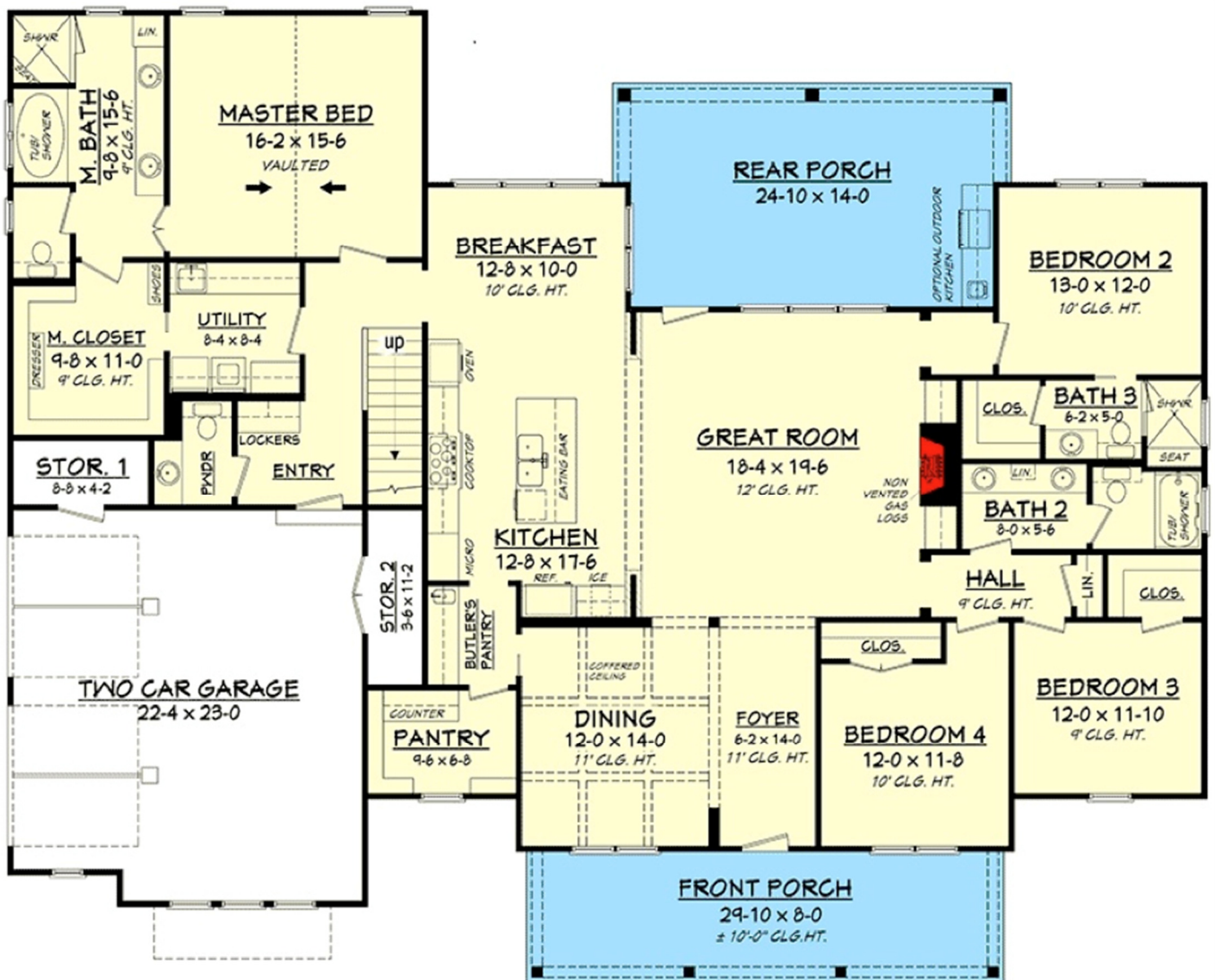




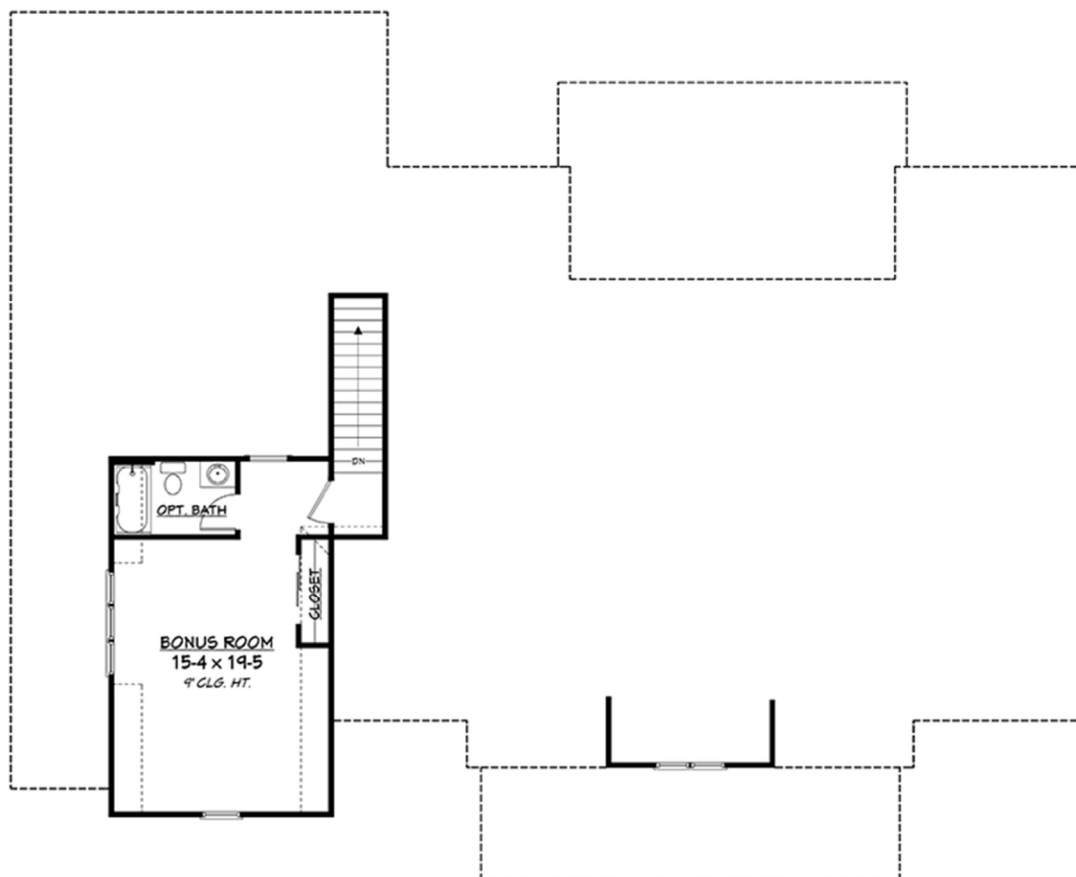
# The Farm at Highland Lake Village

## The “AMBER FIELDS”

First Floor







Second Floor – Optional Bonus Room – Over Garage

### Square Footage Breakdown

- Total Heated Area: 2,742 sq. ft.
- 1st Floor: 2,742 sq. ft.
- Bonus: 433 sq. ft.
- Porch, Front: 239 sq. ft.
- Porch, Rear: 332 sq. ft.

### Beds/Baths

- Bedrooms: 4 or 5
- Full bathrooms: 3 or 4
- Half bathrooms: 1

### Dimensions

- Width: 76' 8"
- Depth: 61' 10"
- Max ridge height: 27' 0"

### Garage

- Type: Attached
- Area: 563 sq. ft.
- Details: 2 Cars
- Location: Side

